

PRIME SHOP TO LET

32 ENDELL STREET, COVENT GARDEN WC2

LOCATION

The premises are located in a prime position on Endell Street close to the junction with Shorts Gardens. The property is located on the edge of the Seven Dials Estate.

Operators close by include Parsons, The 10 Cases, Magma Books, Capezio Dancewear, American Classics and Tesco Express.

ACCOMMODATION

The premises are arranged on ground floor only, offering the following approximate area:

Ground Floor 244 sqft

LEASE

A new lease is to be made available for a term to be agreed.

RENT

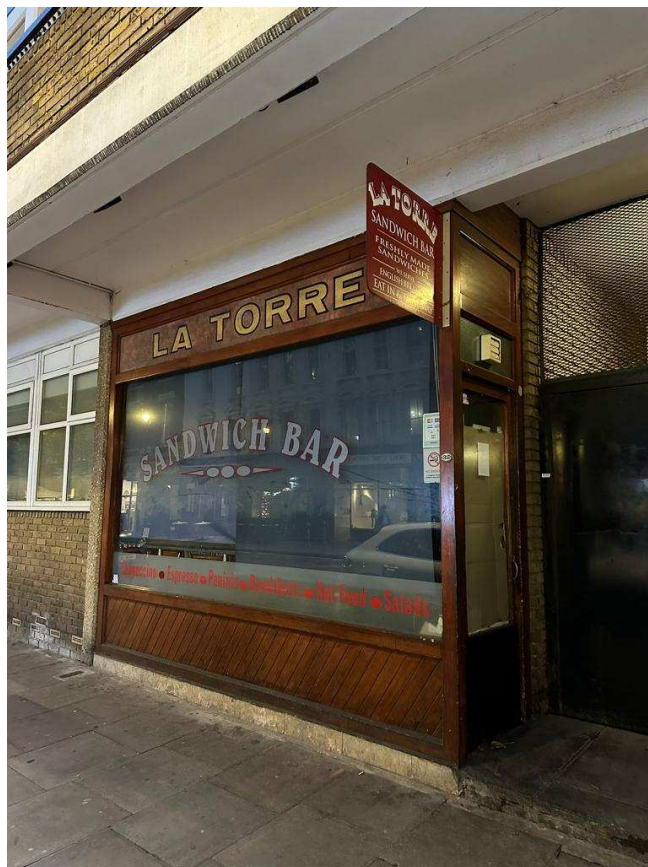
Offers in excess of £25,000 per annum exclusive.

USE

A variety of uses within Class E of the Use Classes Order will be considered.

EPC

Available on request.



RATES

Rateable Value (23/24) £14,000

Rates Payable (23/24) £6,986 per annum

The above figures are an estimate. Further rates relief may apply. Interested parties are advised to enquire with the Local Authority.

LEGAL COSTS

The incoming tenant will pay the landlord's reasonable legal fees in connection with the transaction.

VIEWINGS:

Strictly through solely agents, Blanchflower Lloyd Baxter:

Oliver Fowler

Email: ofowler@blb.uk.com

Tel: 0207 491 8249

Mob: 07900 217 624

These particulars are for guidance only, accuracy cannot be guaranteed. They do not form part of any contract.

2nd Floor, 36 Lexington Street, London W1F 0LJ – Tel: 020 7491 7880



50 metres

Experian Goad Plan Created: 29/12/2022
Created By: Blanchflower Lloyd Baxter



Copyright and confidentiality Experian, 2022. © Crown
copyright and database rights 2022. OS 100019885

For more information on our products and services:
www.experian.co.uk/goad | goad.sales@uk.experian.com | 0845 601 6011